

Bespoke Facade System

Bespoke Facade

GB-Sol were selected to design and manufacture custom sized PV modules for a unique facade system for an Oxford City Council regeneration project.

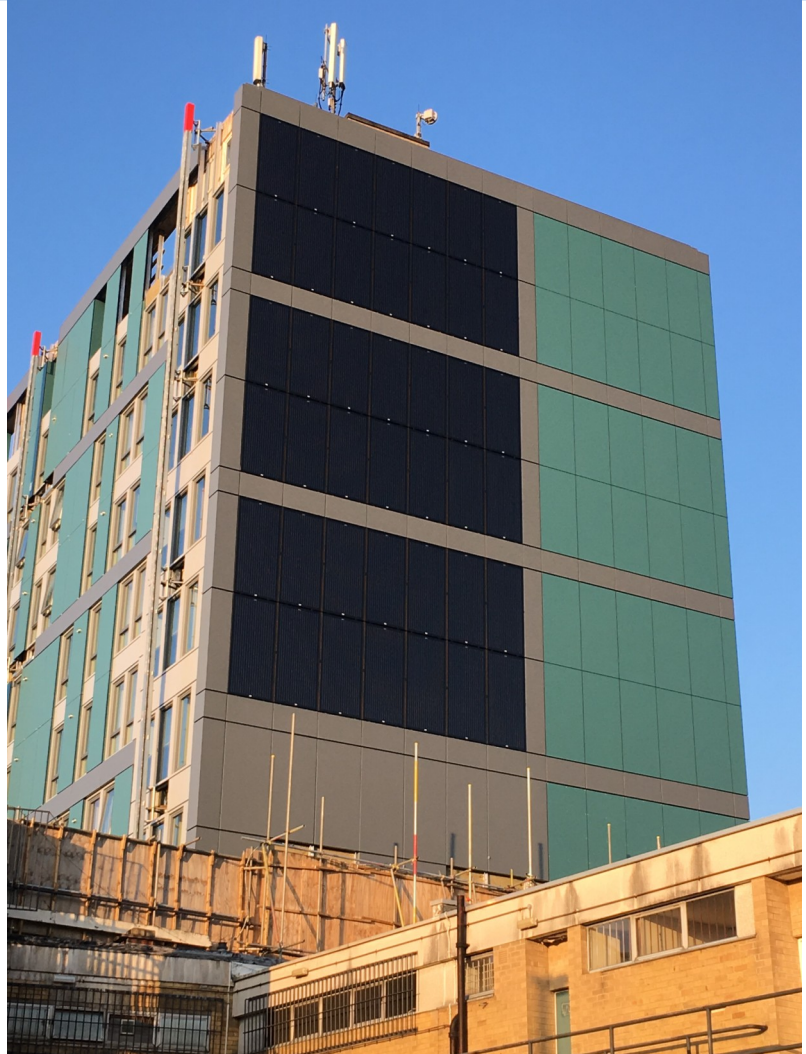
Design

The panel size was selected to match the facade layout and created large dimensions which presented challenges in design and manufacture. Each panel contained 84 cells providing over 350Wp each. Since the maximum dimension measured over 2m this required a customised frame system and the mounting system was co-ordinated with the facade structure.

GB-Sol's ability to manufacture panels to almost any size and shape was ideally suited to this project, allowing the panels to blend in perfectly with the surrounding cladding.

Benefits

The 14.7kWp system was part of a major regeneration project which will provide residents with a revitalised building both inside and out. The solar PV facade will generate renewable electricity whilst also providing a stylish, modern building exterior



Installation

MCS approved installer Spirit Solar (<http://www.spiritsolar.co.uk>) are well known for their quality installations. Experienced at installing bespoke GB-Sol systems, they were perfectly suited to such a project.

Working at heights on a vertical surface with panels over 2m long provided many challenges.

A truly UK designed and produced solution maximised the system's CO₂ efficiency.



www.oxford.gov.uk



Case Study Tower Facade - October 2016

GB-Sol – Specialists in bespoke PV panels, mounting systems and PV accessories