

Complete PV Roof System—Cassiobury Park



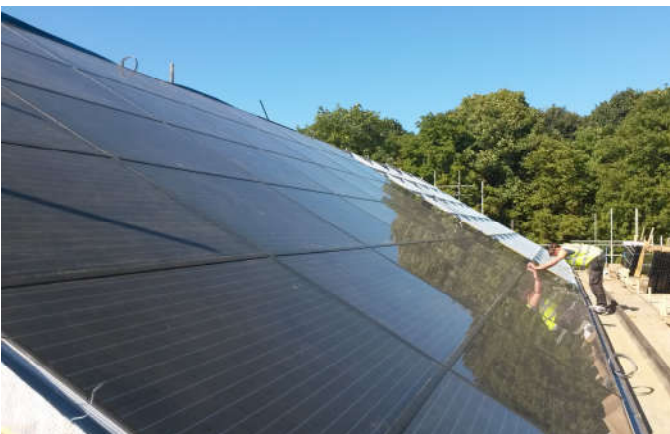
The Project

GB-Sol were approached to design a full roof integrated system for a new eco-hub at Cassiobury Park. As part of the regeneration of the park, it was important for the building to be environmentally friendly. The new Eco-hub uses natural materials and was designed to be as energy efficient as possible.

The roof integrated solar PV system comprised of 78 x 250W solar panels, totalling nearly 20kWp. As the building was to contain toilets, changing rooms, a community and exhibition room, education space and a cafe, electricity use was anticipated to be high, especially during the busy summer months. A large solar PV system provided the ideal solution, generating most of its energy during the park's busiest season.

The mono-pitched roof posed some challenges when it came to designing the flashings. The decision was made to install the solar panels first and then measure for the bespoke flashings to ensure the best fit.

A unique design feature of this project is the panels overhang the building by around half a metre at the ridge line. The capability of our system to design custom flashings allowed for this modern and stylish look and maximised the number of panels on the roof.



Installation

The installation was completed by GB-Sol approved MCS installer Sustainable Solar Solutions.

Experienced with our RIS system, the Sustainable Solar team were able to undertake the challenge of working on such a large roof.

All components from the panels to the frame and flashings were manufactured in our UK production facility, helping to keep transport emissions to a minimum and providing a low carbon footprint.

Case Study Cassiobury Hub Park

GB-Sol – UK manufacturer of bespoke PV panels and mounting systems